

# **Goldy Windows Data Recovery User Manual**

## **Manual Guide**

### **Version 3.0**

#### **1.About Goldy Windows Data Recovery**

##### **1.1 Introductiong**

##### **1.2 Key Features**

##### **1.3 System Requirements**

#### **2.Installation and Uninstallation**

##### **2.1 Insatllation**

##### **2.2 Uninstallation**

#### **3.User Interface**

##### **3.1.1 Menu Bar**

##### **3.1.2 Option Menu**

##### **3.1.3 Help Menu**

##### **3.2 Tool Bar**

#### **4.Using Goldy Windows Data Recovery Software**

#### **5.Purchase**

#### **6.Conclude**

#### **7.Support**

#### **8.Copyright**

## 1.Introduction Goldy Windows Data Recovery Software

Goldy Windows Data Recovery Software allow you to recover files that have been permanently deleted, formatted, or corrupted from Windows OS. You can recover mistakenly deleted data from Windows that is not in the recycle bin.

### 1.2 Key features

- Windows data that has been corrupted, lost, or damaged can be recovered.
- Recovers Windows data that has been corrupted due to deleted partitions..
- Data recovery from detachable storage devices such as pen drives and external hard drives is supported.
- Before saving files and folders to your system, preview them.
- Recover data from Windows that has been permanently deleted

### 1.3 System Requirements

#### Hardware Requirements

Pentium Class Processor

128 MB RAM Minimum

60 MB free space for software installation

#### Software Requirements:

#### Supported Operating Systems (32/64-bit version) :

Supports Windows XP, Vista, 7, 8, 8.1, 10.11

## 2.Install Goldy Windows Data Recovery Software

### 2.1 Installation

#### Your step-by-step tutorial to installing Goldy Windows Data Recovery Software:

To be able to seamlessly install Goldy Windows Data Recovery Software on your computer, simply execute the steps given below:

- First and foremost, ensure that your host computer meets the minimum system requirements and has ample memory available.
- After that download Goldy Windows Data Recovery Software from the website: <http://www.goldytools.com>
- You would then need to double-click on the Goldy Windows Data Recovery Software installer.

- Simply, go through and follow the instructions as given on the screen. You would finally get to see the setup installation completion screen. Here, click on the Finish button which would then open the main screen of the Goldy Windows Data Recovery Software.

## 2.2 Uninstallation

### **How to uninstall Goldy Windows Data Recovery Software?**

There are two simple ways of uninstalling Goldy Windows Data Recovery Software from your computer system:

- Option 1: By using the Windows Start menu.
- Option 2: By using the Control Panel.
- 

Kindly note: Be cautious about the fact that the Goldy Windows Data Recovery Software is not running in the background of your computer.

### **Uninstalling using the Windows Start menu**

- Go to your computer desktop and click on the Start button from the Windows menu.
- Go to All Programs > Goldy Windows Data Recovery Software > Uninstall Goldy Windows Data Recovery Software.
- You would see a warning message confirming the uninstallation of the software on your computer screen. To confirm, click on the Yes button to Uninstall the Goldy Windows Data Recovery Software.

You would then be able to successfully uninstall Goldy Windows Data Recovery Software software from your computer system.

### **Uninstalling using the Control Panel option**

- Go to your computer desktop and click on the Start Menu > Control Panel and then double click the Add or Remove Programs icon. Choose the Goldy Windows Data Recovery Software and then click on Remove.
- You would then see a warning message confirming the uninstallation of Goldy Windows Data Recovery Software.
- To confirm, simply click on the Yes button to uninstall the Goldy Windows Data Recovery Software.

You would then be able to successfully uninstall Goldy Windows Data Recovery Software from your computer system.

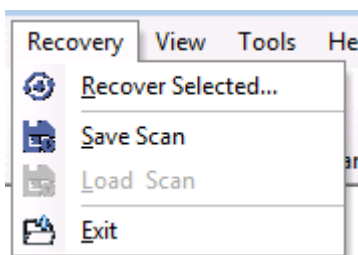
### 3.1.1 Menu Bar

The Software File menu option displays as seen below:

- Recovery Menu
- View Menu
- Tools Menu
- Help Menu

### 3.1.2 Option Menu

The File menu option for Gold y Windows Data Recovery software appears as below:

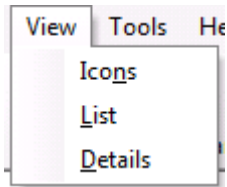


The options accessible in the Recovery menu are listed in the table below:

Option	Description
Recover Selected	Select this option to begin the process of saving recoverable data.
Save Scan	When you don't have time to sit and wait for the data to be stored on your computer's hard disk or another storage medium, choose this option to save the recoverable data as a snapshot.
Load Scan	Select this option to load the previously saved snapshot.
Exit	To close the software, select this option.

### 3.1.3 View Menu

The View menu option for Gold y Windows Data Recovery software appears as below:

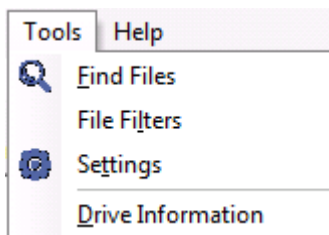


The options accessible in the View menu are listed in the table below:

Option	Description
Icons	Select this option to see the recovered files as icons.
List	Select this option to see the recovered files in a list format.
Details	Select this option to display the recovered files with full details such as size, type, date, and so on.

### 3.1.4 Tools Menu

The software's Tools menu appears, as seen in the figure below:

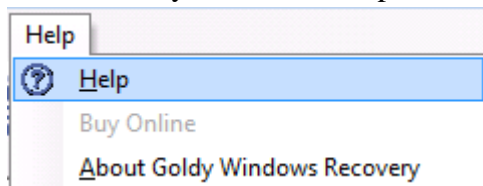


The choices accessible in the Tools menu are listed in the table below:

Option	Description
Find Files	Select this option to search for specific files inside the recovered files. If you need to view.xls files, for example, type *.xls in the "Find Files" dialog box, and the software will reveal all of the MS Excel file(s) among the recovered files.
File Filters	This option works in the same way as the Find Files option. The only difference between the two is that with the Find Files option, you can search for a certain type of file, such as *.xls, but with the File Filters option, you can specify numerous file types, such as *.xls, *.docx, *.pdf, and so on. The software displays the recovered objects based on the file type(s) you specify.
Settings	<p>Select this option to select the following software settings, which will be used to search for lost files and folders:</p> <ul style="list-style-type: none"> <li>• Sectors to be read in a single try</li> <li>• Rename, overwrite, or skip duplicate files</li> <li>• Include deleted files in the search, exclude deleted data from recovered files, or just recover deleted files</li> <li>• Retry count on bad sectors</li> </ul>
Drive Information	Select this option to learn more about the system drive.

### 3.1.5 Help Menu

The Recovery software's Help menu displays, as shown in the figure below:










The choices available in the Help menu are listed in the table below:

<b>Option</b>	<b>Description</b>
Help	Select this option to view the software's User Guide.
Buy Online	If you want to buy the full version of the software, click the Buy Online option.
About Software	Select this option to learn about the Software's version and support.

### 3.1.6 Toolbar


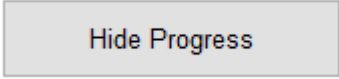
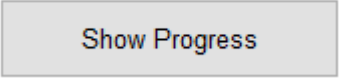



The following options are available from the toolbar menu:

Button	Button Name	Description
 Recover	Recover	To begin the saving procedure, click this button.
 Save Scan	Save Scan	To save the recovery scan, click this button.
 Load Scan	Load Scan	To start the recovery scan, click this button.
 Find	Find	Click this button to enter and search for specific file types among the thousands of recovered files.
 Setting	Setting	Click this button to examine and adjust the following program settings, which will be used to search for lost files and folders: <ul style="list-style-type: none"><li>• Sectors to be read in a single try</li><li>• Rename, overwrite, or skip duplicate files</li><li>• Include deleted files in the search, exclude deleted data from recovered files, or just recover deleted files</li><li>• Retry count on faulty sectors</li></ul>
 Buy Online	Buy Online	If you want to buy the full version of the software, click the Buy Online option.
 Help	Help	If you want to view the Software Manual, select the Help option.



## Buttons Used

The app contains various buttons that assist you throughout the recovery procedure. The buttons used in the software are listed in the table below.

Button	Description
 Recover	To begin the saving procedure, click this button.
	Hide the search process by clicking this button. The software displays the progress of the search for files and folders on the selected logical disk drive. Simply click the "Hide Progress" option if you don't want to view that progress. Clicking the "Hide Progress" button also speeds up the recovery process.
	To view the progress of the search, click this button.
	To go to the next phase in the recovery procedure, click this button.
	During the recovery procedure, click this button to return to the previous screen.
	Click this button to pause the searching or saving operation.

## Recover Data from Logical Drives

Apart from recovering data from physical devices connected to the computer, software can also recover data from logical disks in your computer. The software completely scans the selected drive during the recovery process to give you with the restored data. The software offers the following modes for recovering lost data from a logical drive:

[Quick Recovery](#)

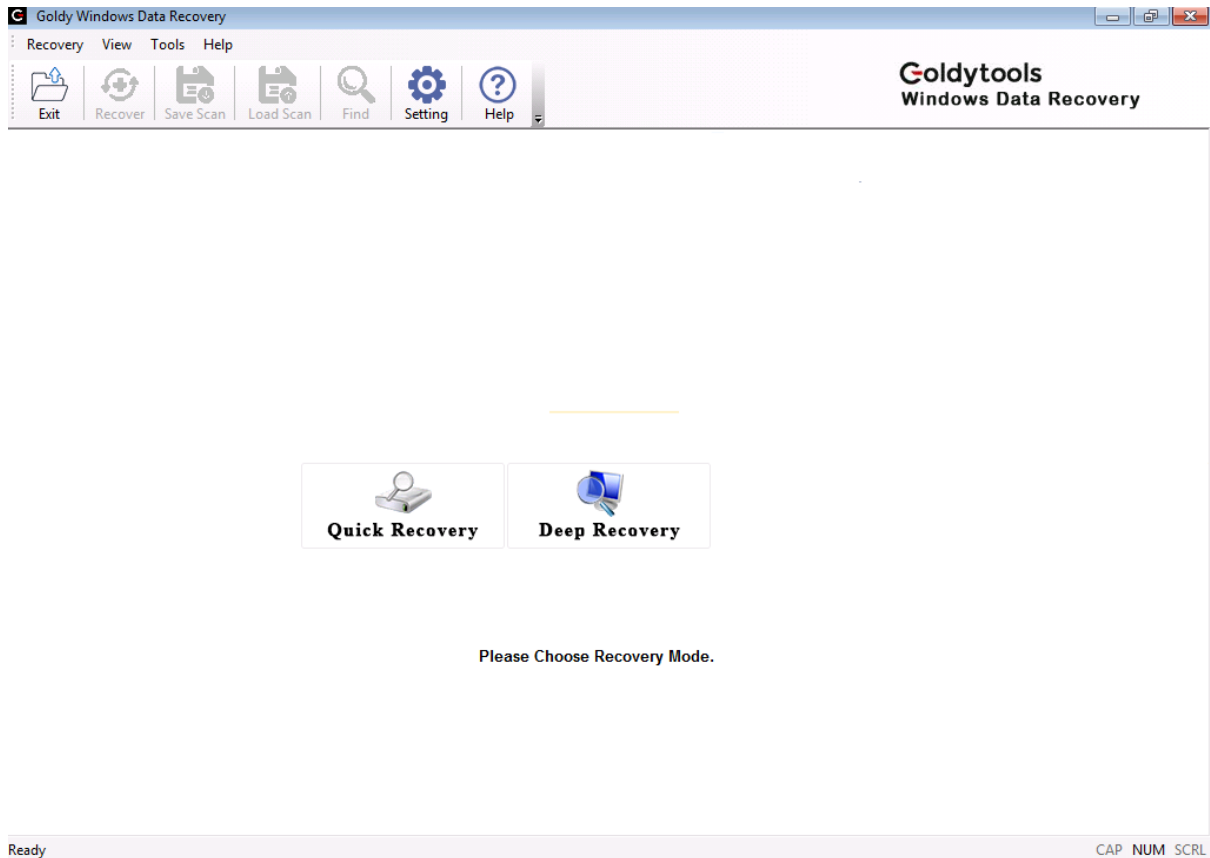
[Deep Recovery](#)

### Using the Quick Scan Mode

"Quick Scan," as the name implies, is a rapid and accurate data recovery mode. This recovery option is useful for recovering recently deleted files, files damaged by bad sectors, FAT corruptions, Index corruptions, MFT corruptions, system files that become corrupt, and partitions that are erased.

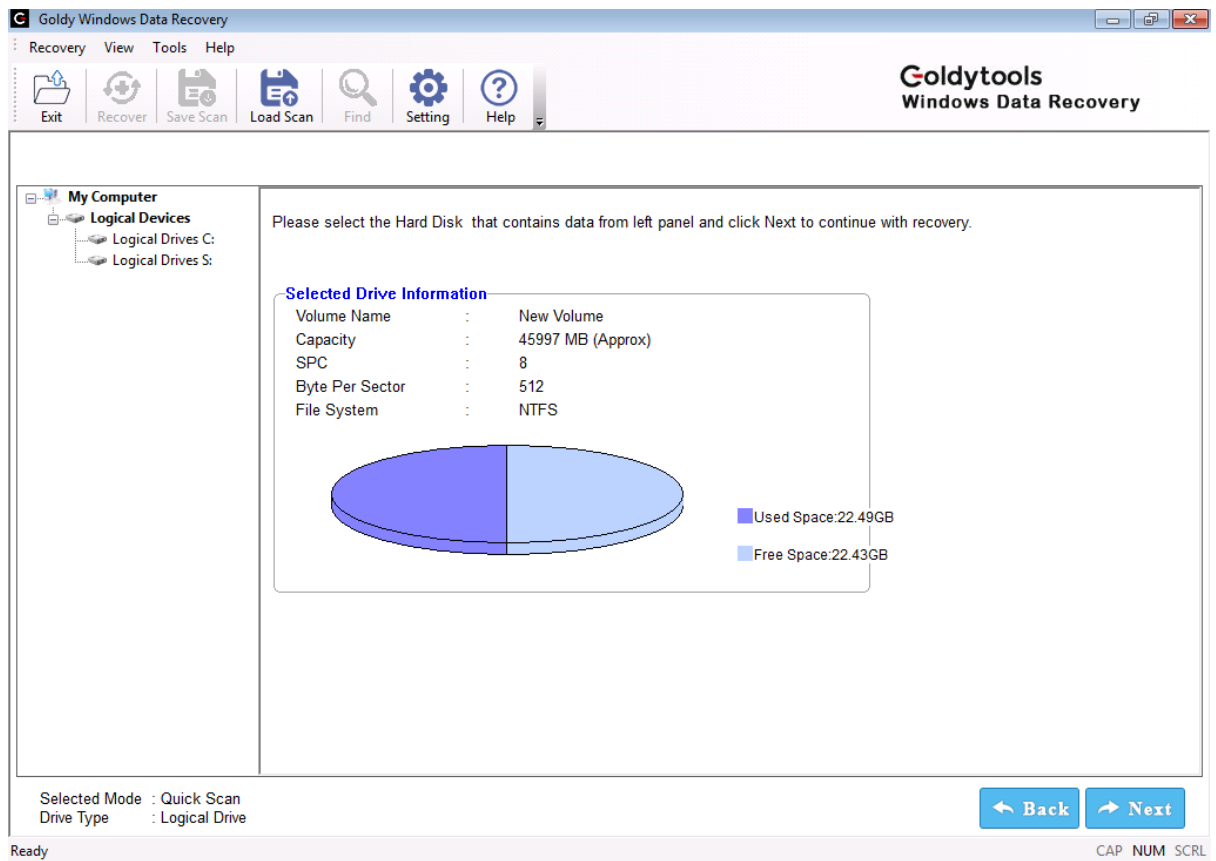
The Quick Scan recovery mode scans and searches your corrupt hard disk for data quickly. The recovery method displays the recovered files and folders in a tree-like layout, allowing you to preview individual files. To recover data using Quick Scan mode, follow the steps below:

To launch the software, go to Start > All Programs > Software > Software. The software home Window appears, giving you a summary of the recovery modes available:



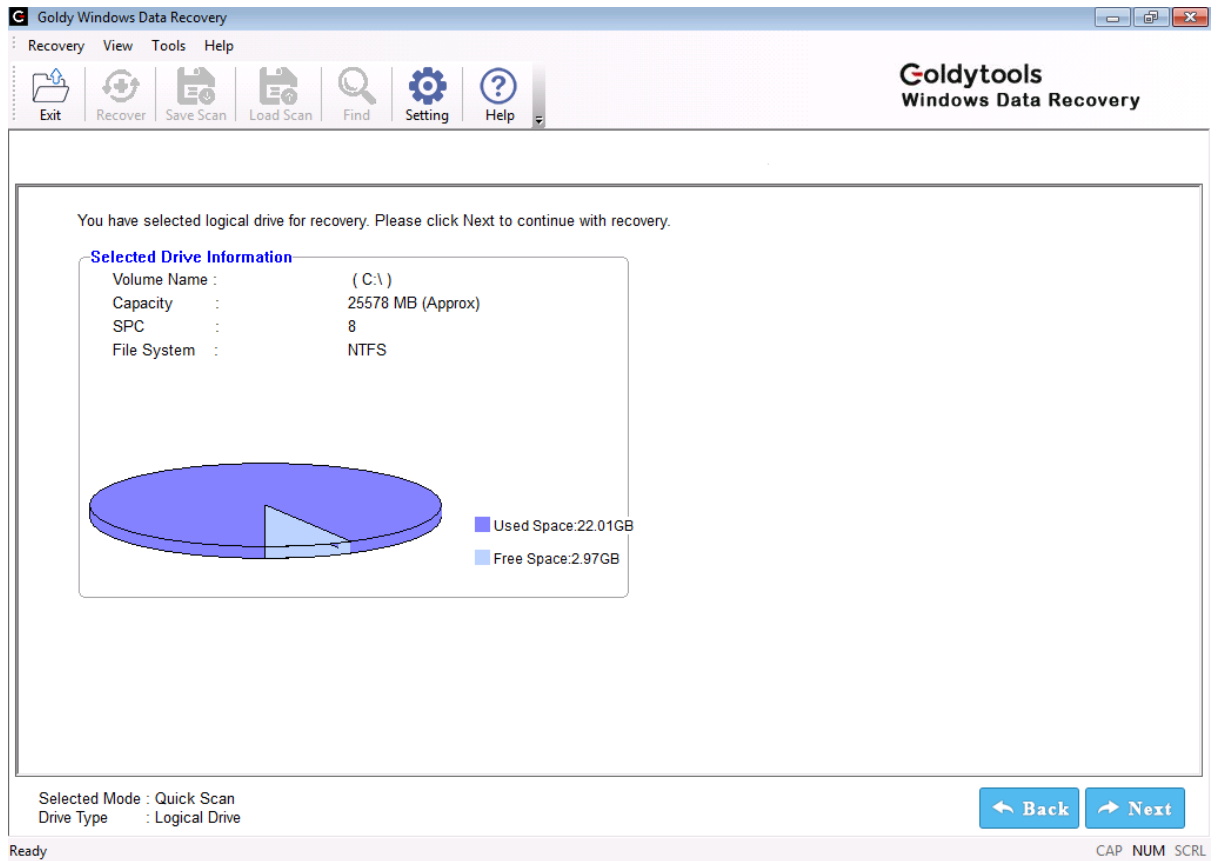
#### 4.1

Select the Quick Scan option. All logical drive(s) on your computer are displayed.

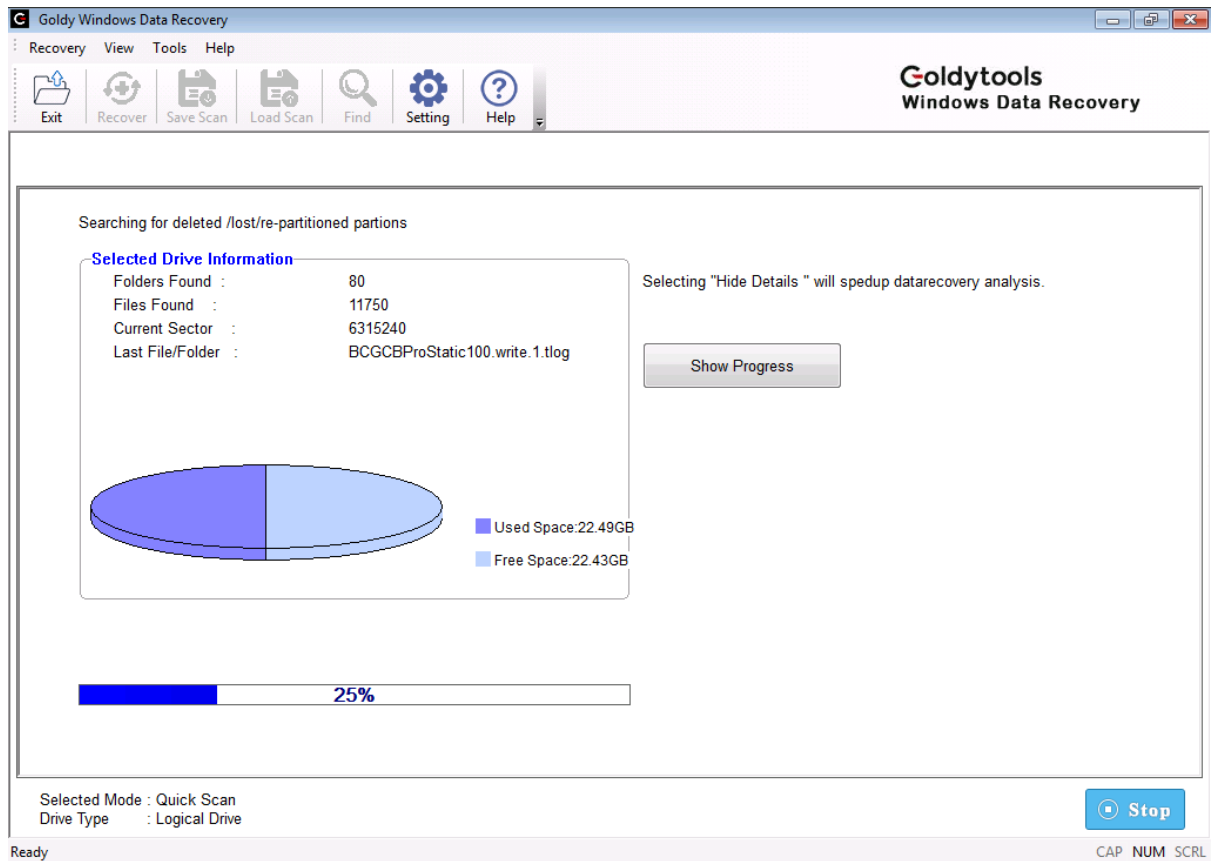


## 4.2

Navigate to the Logical Devices node and choose the drive from which you want to recover the data. When you pick a drive, the following information displays in the right panel: volume name, capacity, etc.



4.3 To proceed with the recovery, click the Next button.

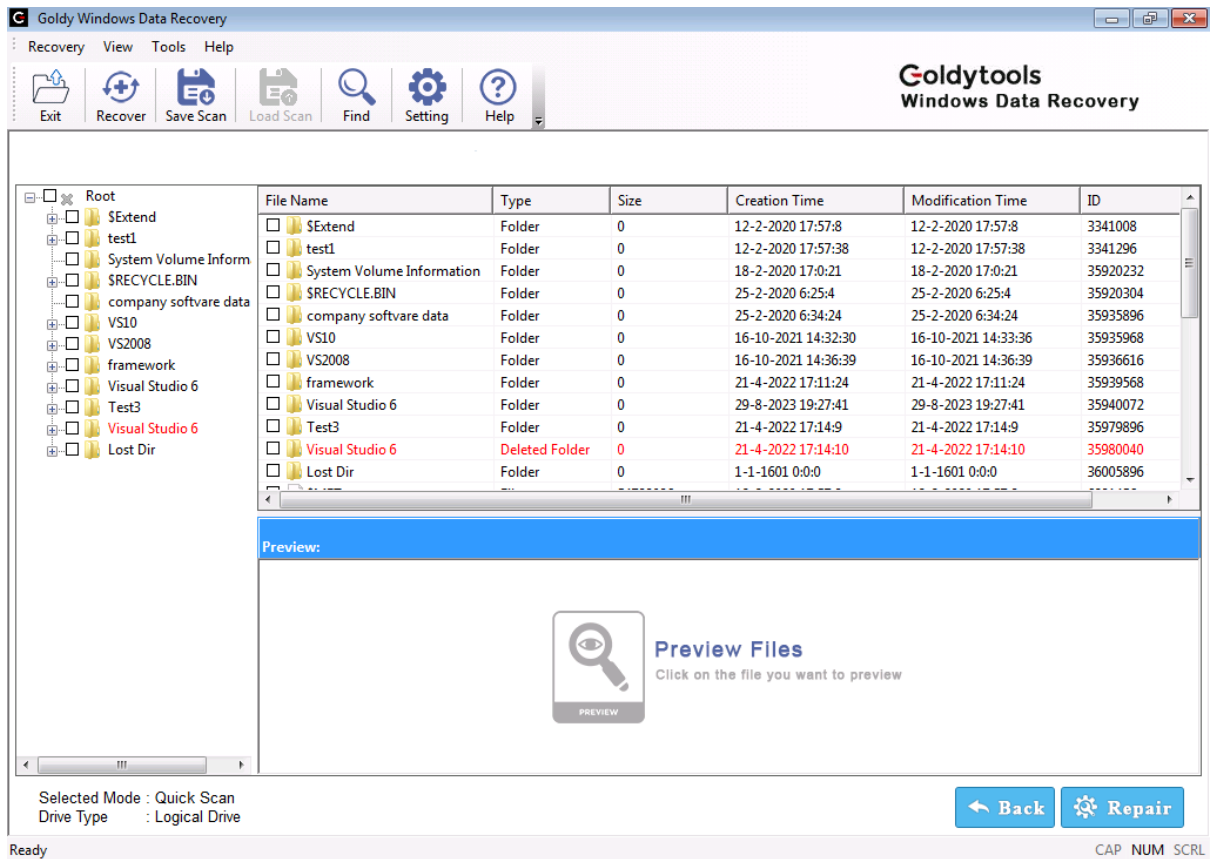


4.4. Click the Next button once more.

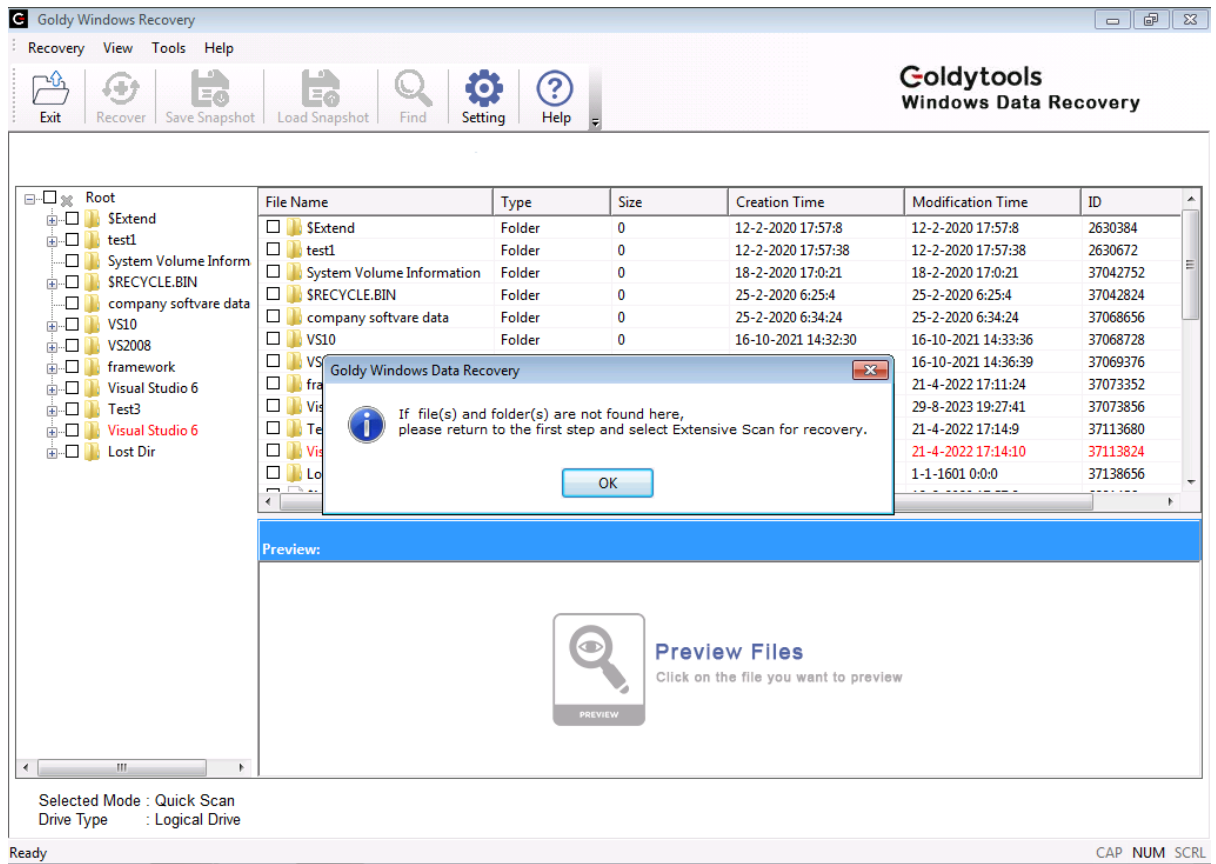
4.5. The software begins looking for recoverable data.

1. **Note:**

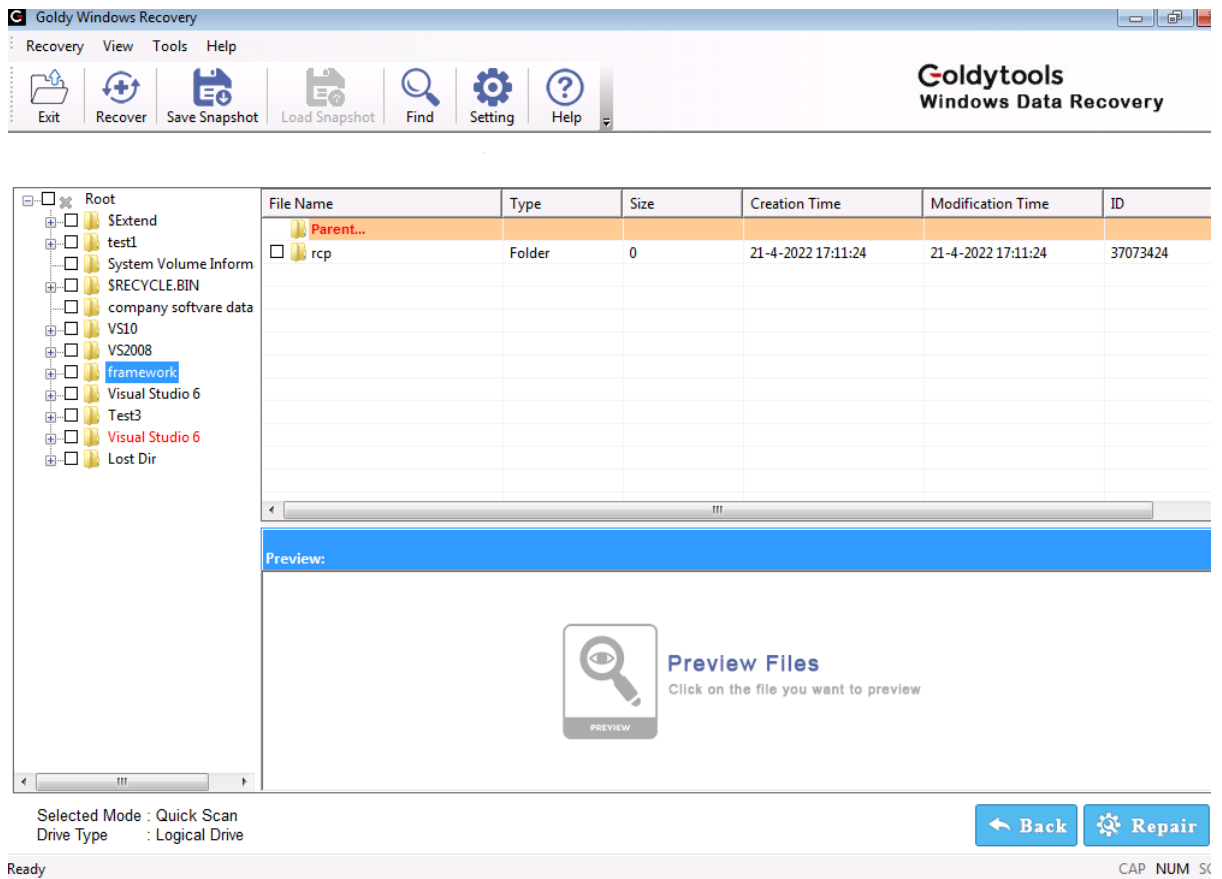
- To optimize the performance of data searches and hide the progress indication, click the Hide Progress option.
- At any time, click the Stop button to halt the search.



After the search is finished, a dialog box displays urging you to use the "Deep Scan" mode (if the required result is not found).

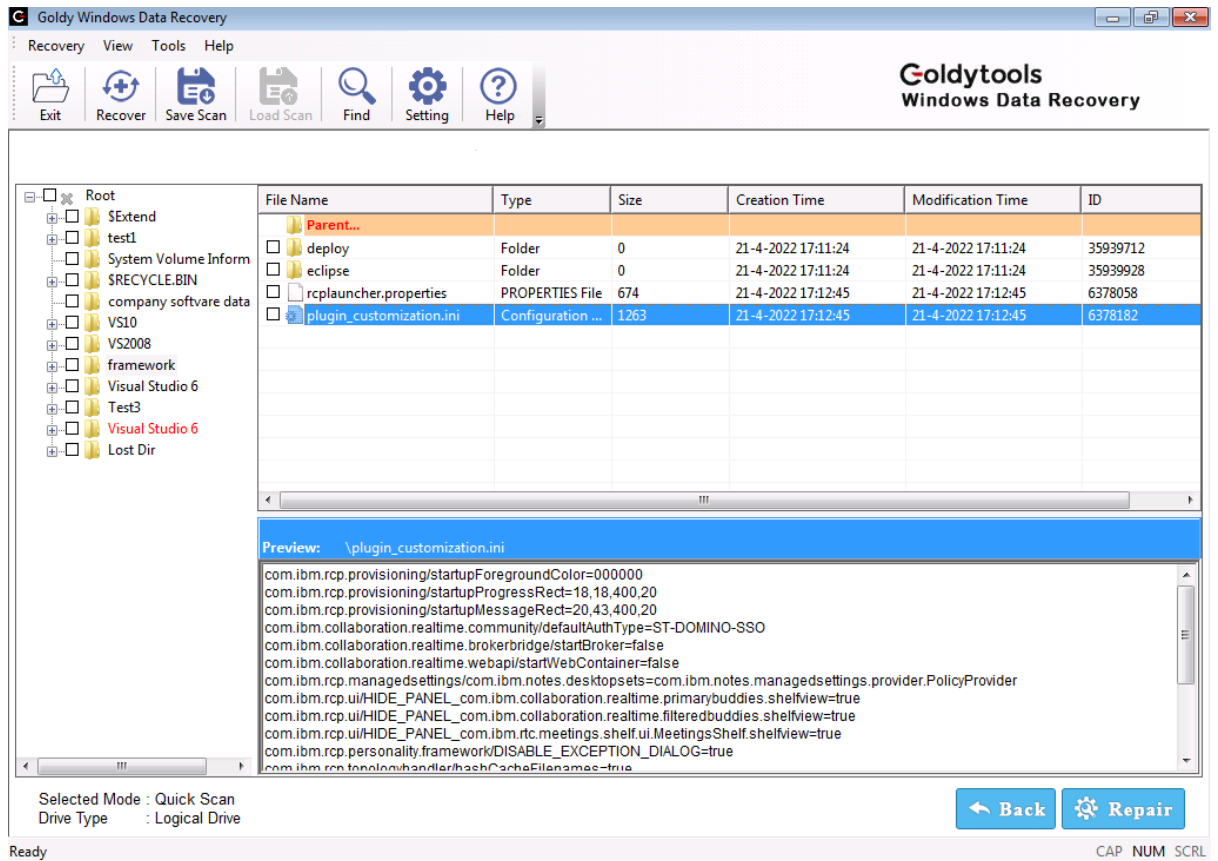


4.6. To close the dialog box, press the OK button. In the left panel of the software Window, all Recoverable files are shown in a tree-like layout.

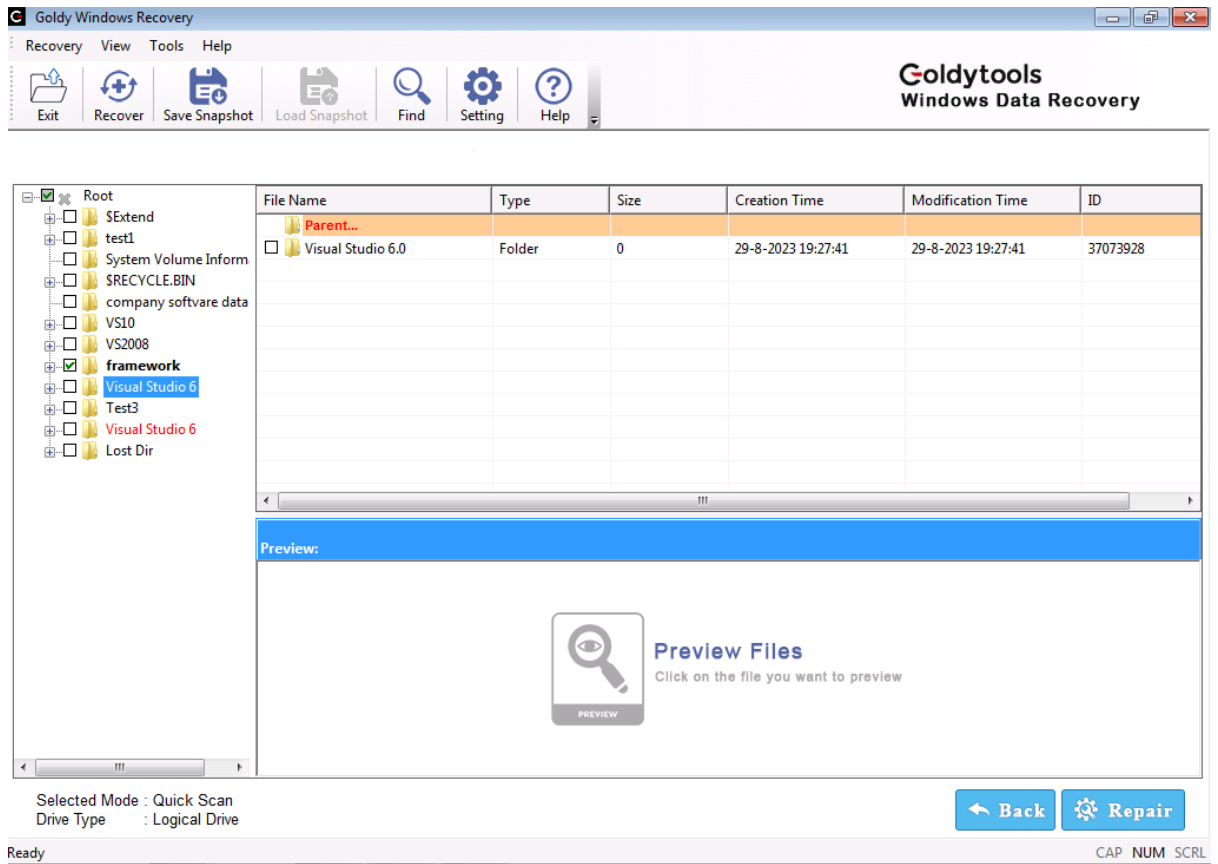


4.7. Choose a folder in the left tree whose contents you want to double-check before saving. When you select a folder, the contents of that folder will be presented in the right panel.

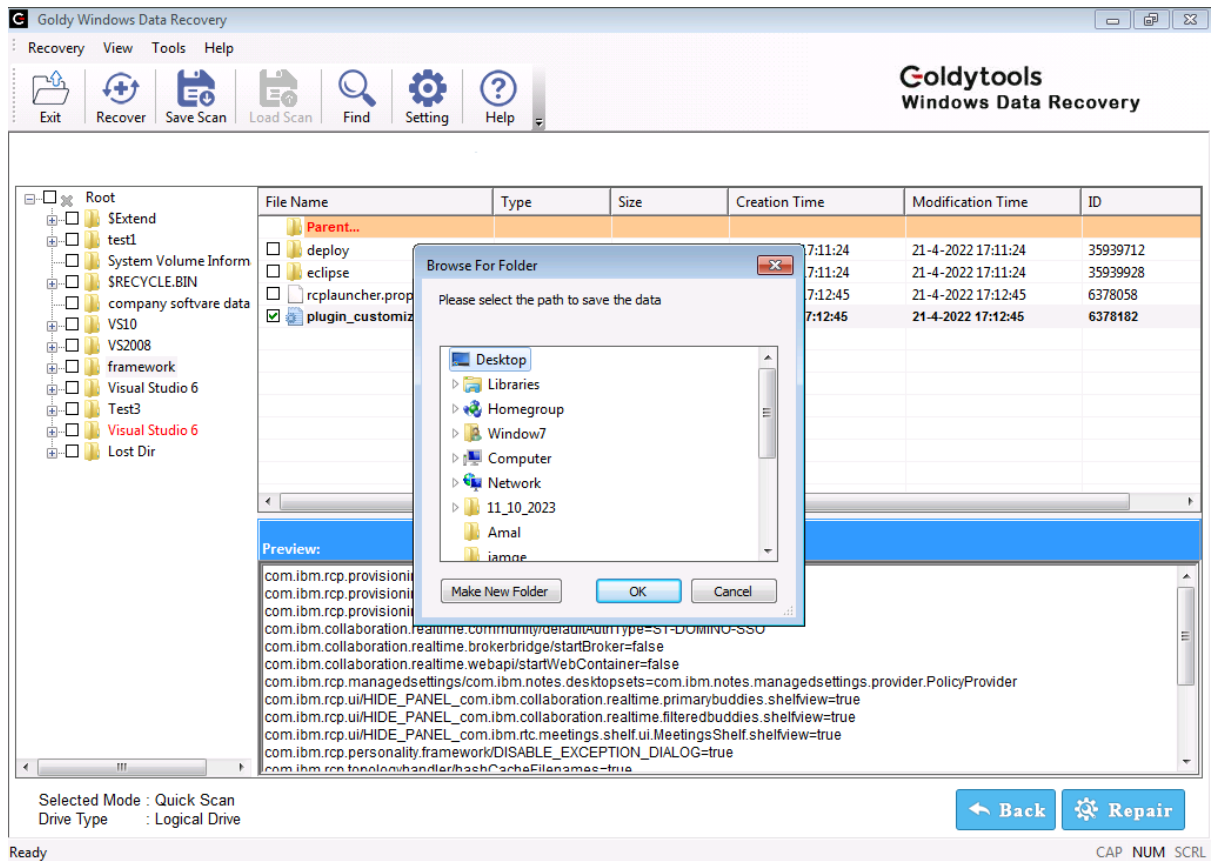




4.8. Now, select an item from the right panel to preview it. The preview of the selected item is displayed by the software.

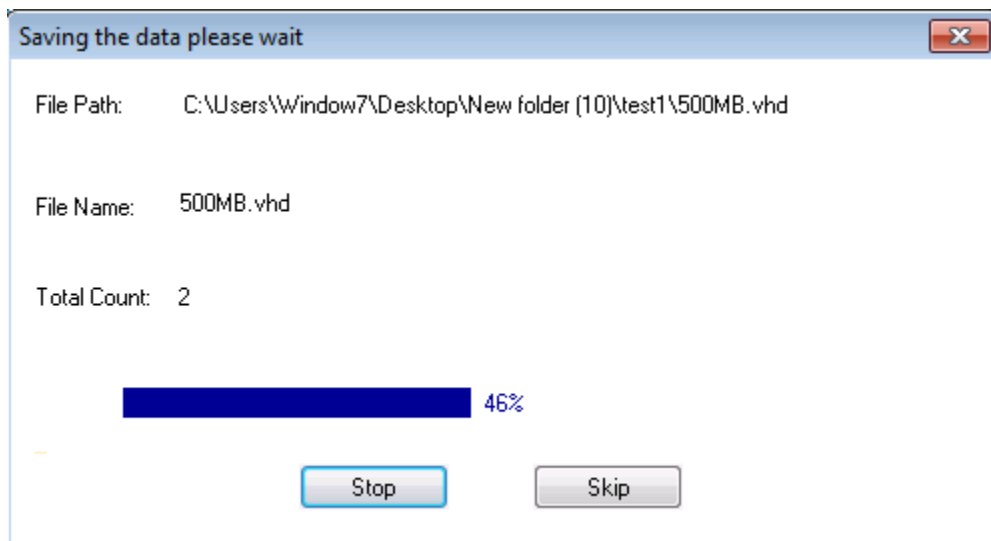


4.9. Select the appropriate items for saving after previewing them, and then click the Repair option. The dialog box "Browse for Folder" displays.



4.10. Choose a location to save the selected objects, then press the OK button. The software begins saving the selected objects at the place specified.

1. **Note:** You can cancel the saving process by clicking the Stop Saving button, or you can skip any file by clicking the Skip File button.



When the saving process is finished, a dialog box with the message "Files Saved Successfully" displays.

11. To close the dialog box, press the OK button.

You can now access the recovered file(s) from the stored location.

Using the Deep Scan Mode

**Deep Scan** mode is a far more advanced recovery mode than Quick Scan mode. This option effectively recovers files that the Quick scan mode did not recover. This option efficiently recovers deleted, lost, or corrupt folders. Furthermore, data that has been lost due to partition deletion, formatting, or regeneration is effectively retrieved utilizing this mode. Furthermore, files that were deleted a long time ago can be recovered utilizing this technique. The deleted files that are retrieved using this option are highlighted in red. The procedures below will assist you in recovering deleted data using the Extensive Scan mode:

1. Begin the software.
2. Click on the **Deep Scan** icon. All accessible logical drive(s) on your computer are displayed.
3. Under the Logical Devices node, select the disk from which you want to recover the data. When you pick a drive, details such volume name, capacity, and so on appear on the right panel.
4. Click the **Next** button to begin the search. The software begins to look for data in the selected device.

**Note:**

- To **optimize** the performance of data searches and hide the progress indication, click the Hide Progress option.
- At any time, click the **Stop** button to stop the search.

After the search is finished, all recoverable files are presented in a tree-like form in the software's left panel.

5. In the left tree, select a folder whose content you want to double-check before saving. When you select a folder, the contents of that folder will be presented in the right panel.
6. Now, on the right panel, select an item to preview it. The preview of the selected item is displayed by the software.
7. Select the appropriate items for saving after previewing them, and then click the button. The dialog box "Browse for Folder" displays.
8. Choose a location to save the selected objects, then press the OK button. The software begins saving the selected objects at the place specified.

Note: You can pause the saving process by clicking the Stop Saving button, or you can skip a file by clicking the Skip File button.

When the saving process is finished, a dialog box with the message "Files Saved Successfully" displays.

9. To close the dialog box, click the **OK** button.

#### 4.10 Preview Recovered Files

Every sort of file can be recovered from a corrupt drive using software. The software recovers all types of files and allows you to see the recovered file(s). You may receive the following message(s) while previewing the selected file:

- **Select file for preview:** This message appears when the software asks you to choose a file to preview.
- **Preview not available for this file type:** This message appears when a preview of a specific file type is unavailable. The software allows you to preview certain recovered file formats, which are listed below.
- **File Corrupted:** When the recovered file is corrupted, this message appears. The software will not offer a preview of the corrupted file.
- **File too huge to preview:** This message appears when the recovered image or file's file size is too enormous to preview. This does not imply that the image or file has not been recovered; the file has been recovered, but software will not give a preview of it because it is too large to preview. When you save the recovered results, you can view the recovered file.

Supported File Types for Preview are:

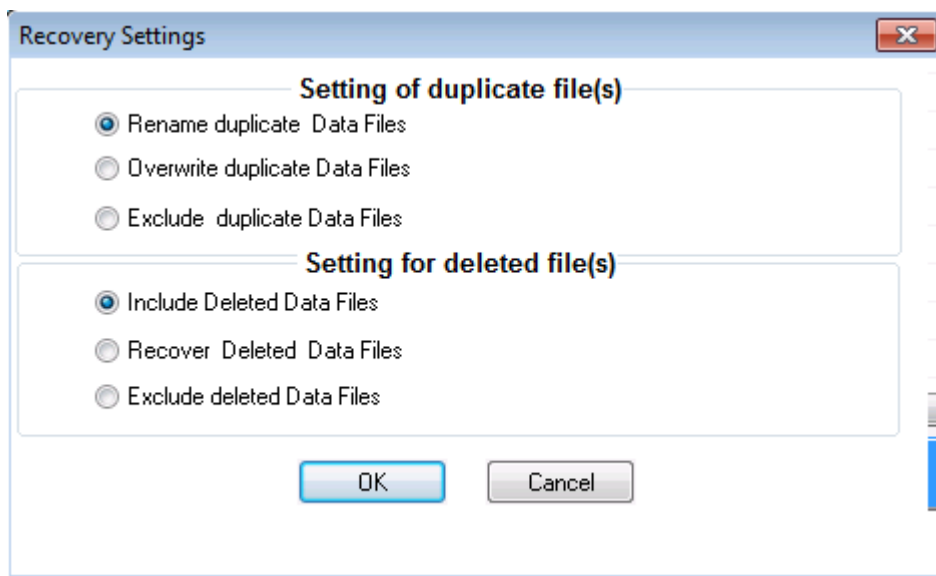
Document Files	Media Files	Archive Files	Database Files	Web Files	Graphic Files
.pdf	.avi	.zip	.dbf	.html	.bmp
.rtf	.wmv	.cab	.mdb	.htm	.png
.doc	.asf	.rar		.mht	.j2k
.xls	.wm	.tar			.jp2
.kdoc	.wma				.j2c
.ppt	.wmv				.jpc
.txt	.wav				.jpg
.c	.snd				.jpeg
.cpp	.au				.pcx
.h	.aif				.png
.hpp	.mpeg				.pnm
.ini	.mpg				.ppm
.xml	.mlv				.tga
	.mp2				.tif
	.mpa				.tiff
	.mid				.gif
					.eml

					.ico
					.psd
					.dxf

#### 4.11 Configure Software Settings

You can customize the recovery settings using software. These options can be selected at the start of the recovery procedure, when the software is launched. The instructions below will assist you in configuring program settings:

1. Launch the software.
2. Go to Tools > Settings. The dialog box "Recovery Settings" displays.



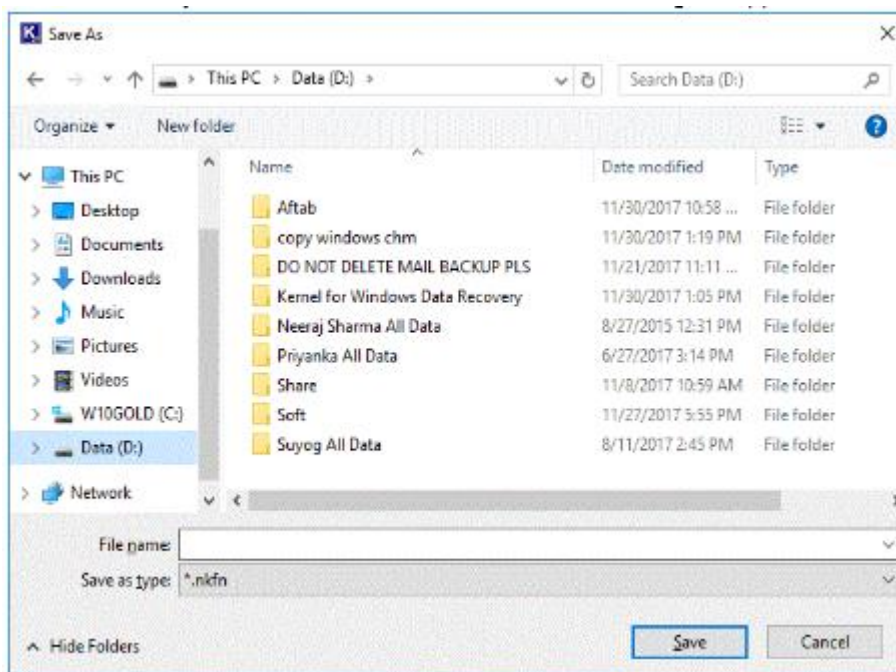
3. Set the options as needed and click the OK button. The software will then operate in accordance with the saved settings.

## 4.12 Save Snapshot

The "Save the drive's scanning process in Evaluation version and load it in Full version" software allows you to save the scanning process of your corrupt hard drive. This feature assists you in repeatedly scanning the drive. Because the evaluation version of the software does not allow you to preserve the recovered files, the preserve Snapshot option comes in handy in this situation. You can transfer the saved snapshot to the Full edition of the software to save time scanning the drive again and speed up the recovery procedure.

By default, the Save Snapshot option is turned off. When the software has revealed the files that can be retrieved, it will be enabled. After the software has **revealed** the files that can be recovered, perform the procedures below to save the recovery snapshot:

1. Click the **Save Snapshot** button in the tool bar. The "Save As" dialog box appears:



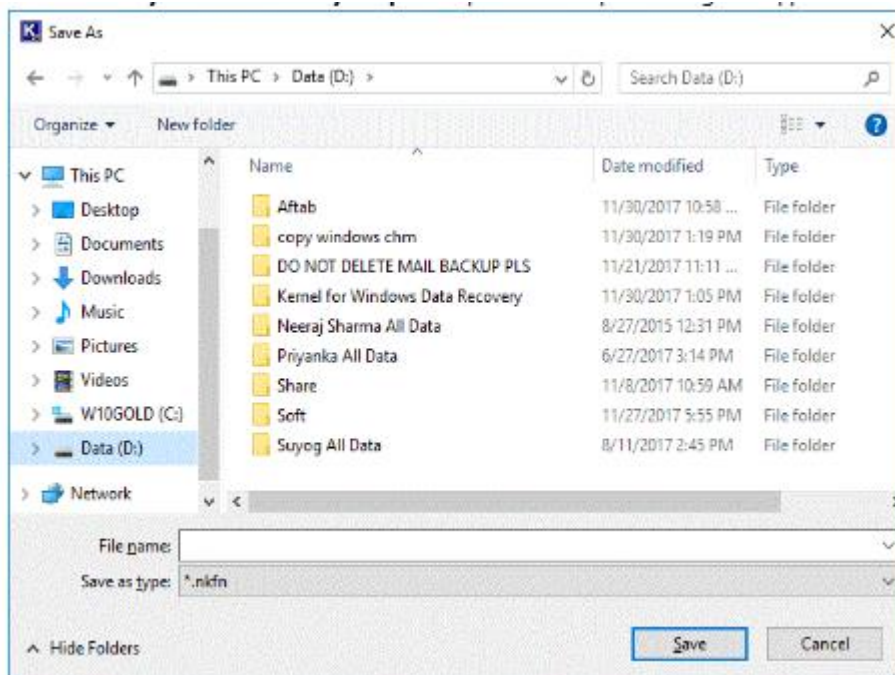
2. In the File name drop-down list, type a name for the recovery snapshot.
3. Specify a location for the snapshot to be saved.
4. To save the photo, click the Save option.

The snapshot will be saved in the '.nkfn' format.

#### 4.13 Load Snapshot

The Load Snapshot feature's goal is to "Load the Saved Snapshot of the scanning process and save your precious time." The Load Snapshot option saves you time by not having to rescan the selected drive for data recovery. To load the saved snapshot, perform the following steps:

1. Launch the software.
2. Choose a scanning mode. The option to "Load Snapshot" will be enabled.
3. Go to Recovery > Load Recovery Snapshot. The dialog box "Open" appears:



4. Click the Open button after selecting the Saved Snapshot.

The selected snapshot is successfully loaded by the software, allowing you to continue the recovery procedure.

#### 4.14 Find File(s)

Thousands of files are recovered during the recovery procedure. You may not need to save all retrieved files. As a result, the Find File(s) tool has been included in the software to assist you in finding a certain file or files based on a specific file type among thousands of recovered files. The methods below will assist you in using the Find File(s) option:

1. Select **Tools > Find Files** option. The "Find Files" dialog box appears:



Search Data X

Enter Search Name

Select All

File Name	Path	File Size	Created Date	

Last File :  Files Found :

2. In the "Enter pattern to search" text box, insert the file name or file type. For example, to search only documents, enter \*.doc in the text field.

3. Press the Begin(start) Search button. The software begins searching for available files among the recovered files.

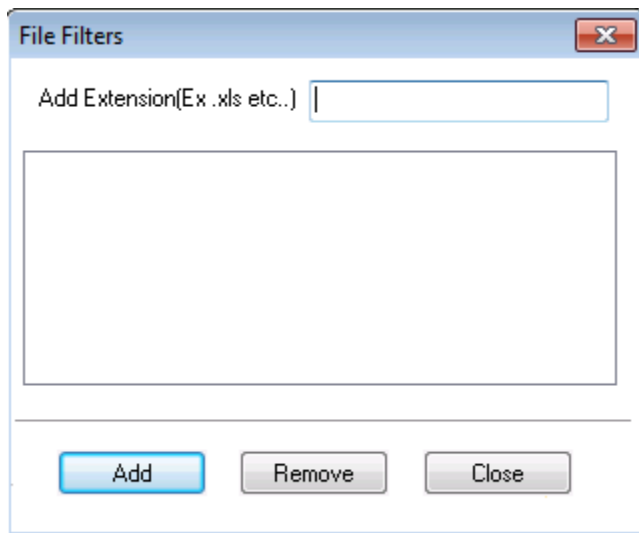
4. Once the software has presented the files, select the ones you wish to save and click the Save Selected File button to save the file(s).

Note: To pause the search process, click the Stop Search button.

## 4.15 File Filters

The File Filters option works in the same way that the Find File(s) option does. The main difference is that you can provide several file types when using the File Filters option, whereas only one file type can be supplied when using the Find File(s) option. For example, if you wish to search for files with the extensions.doc.,.jpeg, and.xls, you may add these extensions to the File Filters dialog box, and the software will display the files that match the stated patterns. The following steps will assist you in using the File Filters option:

1. Select **Tools > File Filters**. The “File Filters” dialog box appears:



2. In the "Enter Filter" dialog box, type a search pattern and click the Add button.
3. Repeat step 2 to include additional search patterns.
4. After you've inserted all search patterns, click the Close button.

Note: To remove the selected search pattern from the added patterns, click the Remove button.

## 5.Purchase:

Buy the Goldy Windows Data Recovery Software

### Payment and Delivery

You can make a purchase by using a credit card. If you wish to make a purchase using some other method then please e-mail us on **sales@goldytools.com**

Once you have successfully purchased the licensed version, a registration key with URL to download the full version will be emailed on your registered email ID. You can **download the FULL version** of the Goldy software immediately once your order is placed and enjoy all the features.

## 6.Conclusion

This User Guide has been developed to ensure that you can easily understand how to Recovery windows delete data. It offers helpful tips and steps so that you have a seamless experience. To know more about the product and to experience its benefits please visit <https://www.goldytools.com/windows-data-recovery.php>

## 7.Support

For further support or if you wish to know more about our products then you can connect with us at <https://www.goldytools.com/Contact.html> and submit your query, or chat with one of our support team members.

Moreover, you can drop us an email by writing to us on any of the IDs given below:

- sales@ goldytools.com (for Sales Queries)
- support@ goldytools.com (for Support Queries)

## 8.Copyright

Goldy Software Private Limited Installation and Configuration manuals as well as associated documents are the property of Goldy Software Private Limited. The company reserves the necessary copyrights. Further, under the copyright laws, this user manual cannot be reproduced in any form without any prior written permission of Goldy Software Private Limited. No patent or any other liability with respect to the use of the information contained herein is permitted. While we have taken great care and have ensured 100% accuracy in the information that we have provided herein, however the company will not be held responsible for anything that is incorrectly mentioned or if you may find inappropriate.

Goldy Software Private Limited - All rights reserved.