

1. Software Interface

Now that Goldy SQL Database Recovery has been installed on your computer, you can start using the software after getting acquainted with the software interface.

1.1 Menu Bar The Menu bar of Goldy SQL Database Recovery comprises three menus:

File Menu

Tools Menu

Help Menu

File Menu The File menu comprises three menu items

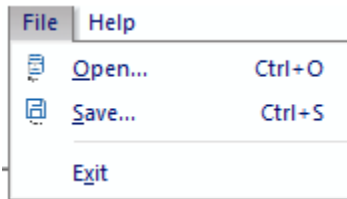
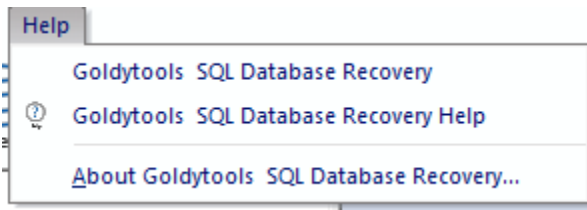


Figure 1.1 File Menu

The following table enlists the options available in the File menu:

Option	Description
Open	Choose this option the damaged SQL database on your hard disk
Save	Choose this option to save the data so recovered from the SQL database
Exit	Choose the option to close the application

1.2 Help Menu The Help menu of Goldy SQL Database Recovery software appears, as shown in the following figure:






The following table enlists the options available in the Help menu:

Option	Description
Goldytools SQL Database Recovery Help	Choose this option to open the User Help Manual of Goldytools SQL Database Recovery software
Goldytools SQL Database Recovery HomePage	Choose this option to visit the software homepage on the website
About Goldytools SQL Database Recovery Help	Choose this option to know the version and support information about the Software.

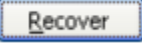



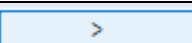
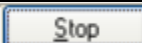

1.3 Tool Bar

Toolbar consists of buttons that work as short cuts for various options available in the main menus of Goldy SQL Database Recovery software. The following table enlists the buttons available on the Toolbar of the software:

Button	Description
 Open	Choose this option to locate the damaged SQL database on Your hard disk
 Save	Choose this option to save the data so recovered from the SQL database
 Help	Choose the Help option if you wish to open the Software Manual

1.4 Buttons Used

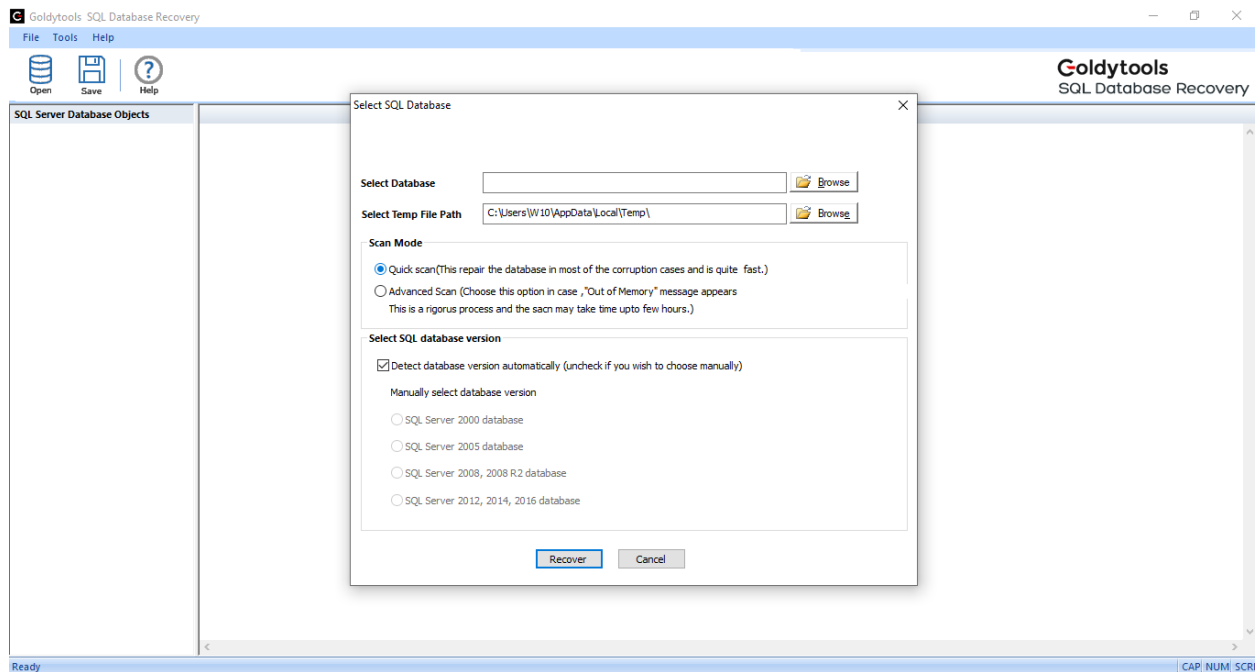
There are several buttons used in the software that helps you throughout the recovery process. The following table enlists the buttons used in the software:

Button	Description
	This option initiates the recovery process of the selected database
	This option cancels the ction and close the dialog
	This option lets you locate the damaged SQL database
	This option takes you to the previous page in record
	This option takes you the next page in record
	This option lets you stop the ongoing process
	This option allows you to refresh the process

1.5 Repairing MDF Files

Goldy SQL Database Recovery is an ideal software that helps you restore objects from corrupt databases. No matter what made your MDF database corrupt or inaccessible, the Goldy SQL database Recovery will recover your data easily and quickly. Follow the steps given below to repair SQLDatabases:

1. Select Start > All Programs > Goldy SQL Database Recovery > Goldy SQL Database Recovery to launch the software. The software home window appears:



- 1.5.1 Click the Browse button to locate the corrupt SQL Database:

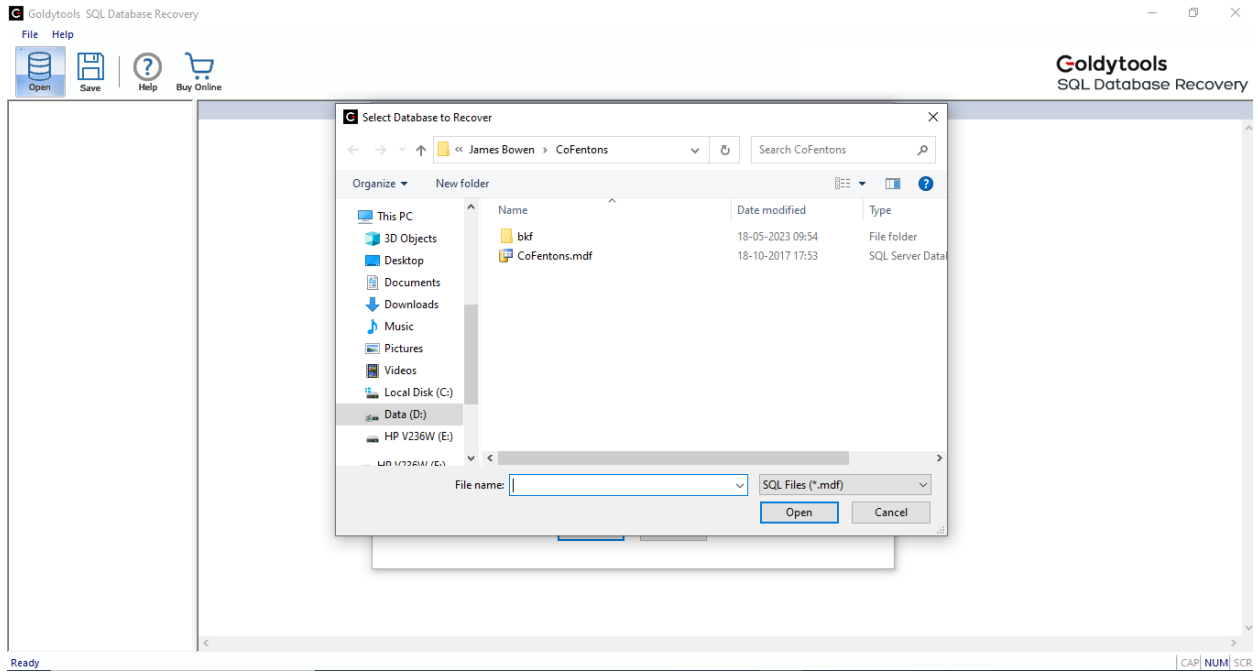


Figure.1.5.2: Locate Corrupt SQL Database

2. Select the SQL Database version with which the .MDF file is created:

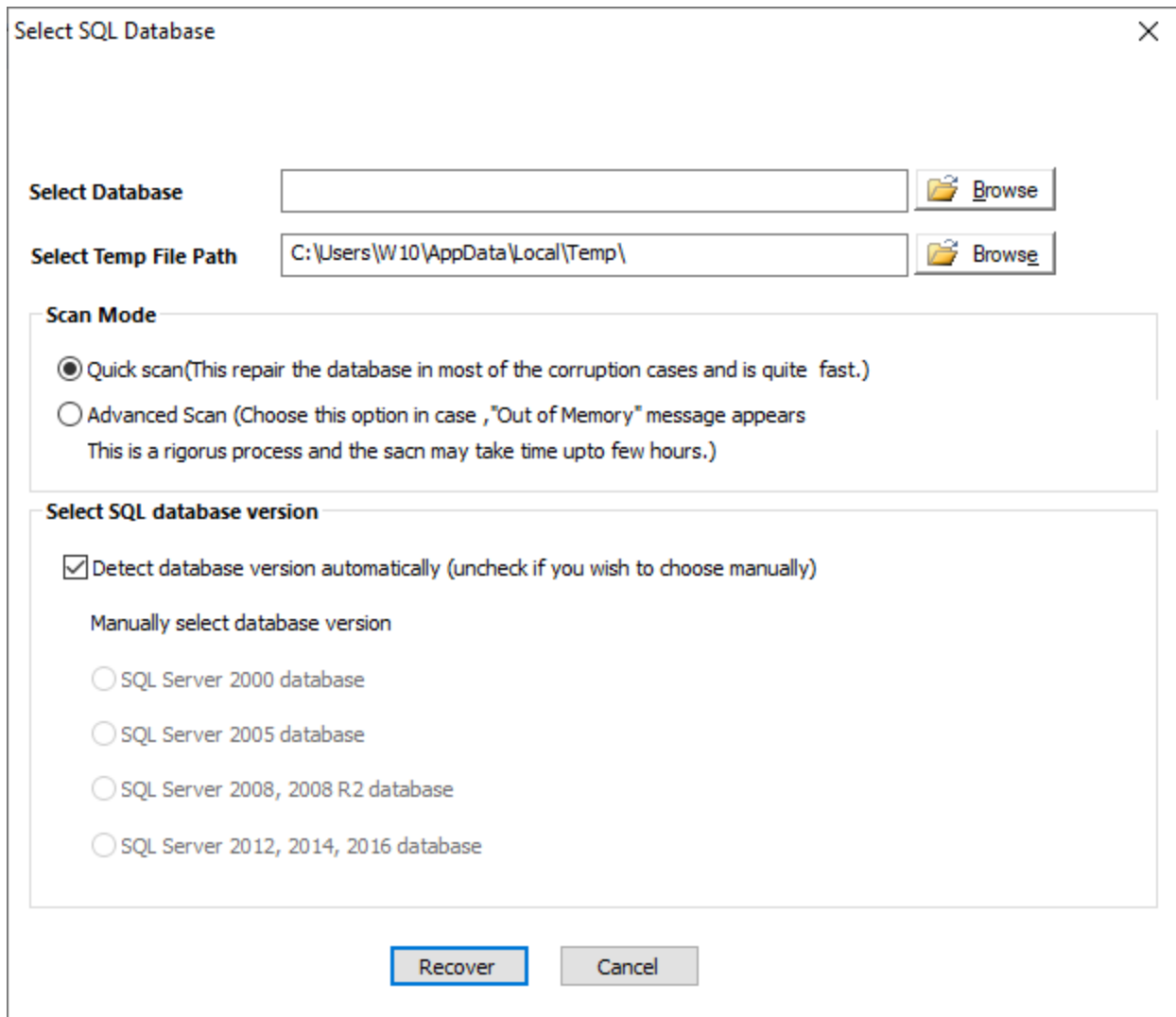
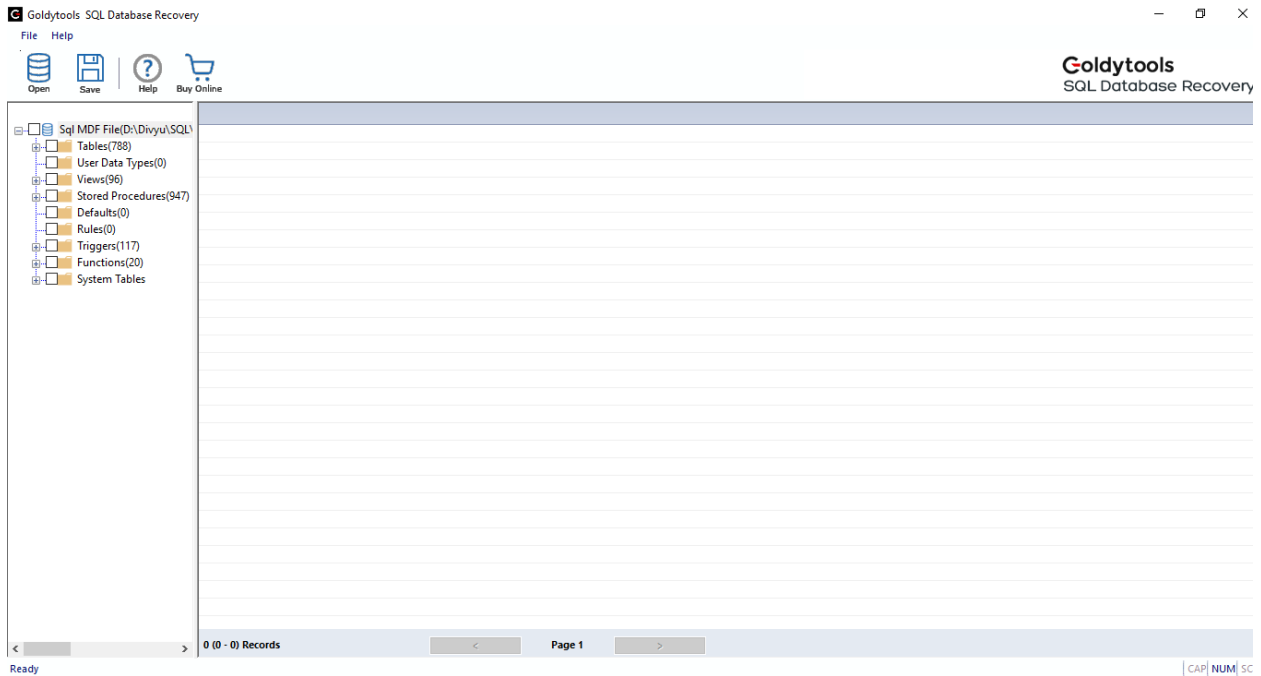


Figure1.5.3: Select SQL Database Version

3. Click the Recover button to initiate the recovery process, and Software will enlist the SQL database objects in the left pane:



Note that, if the user selects the wrong SQL Server version, the software displays the following error message:

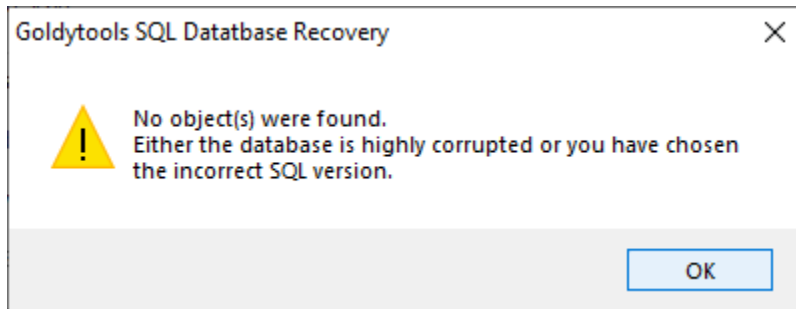


Figure 1.5.4: Error Message on the selection of wrong SQL Server version

4. Select an object in the left tree whose content you want to verify before saving. When you select the folder, its content will be displayed in the right pane

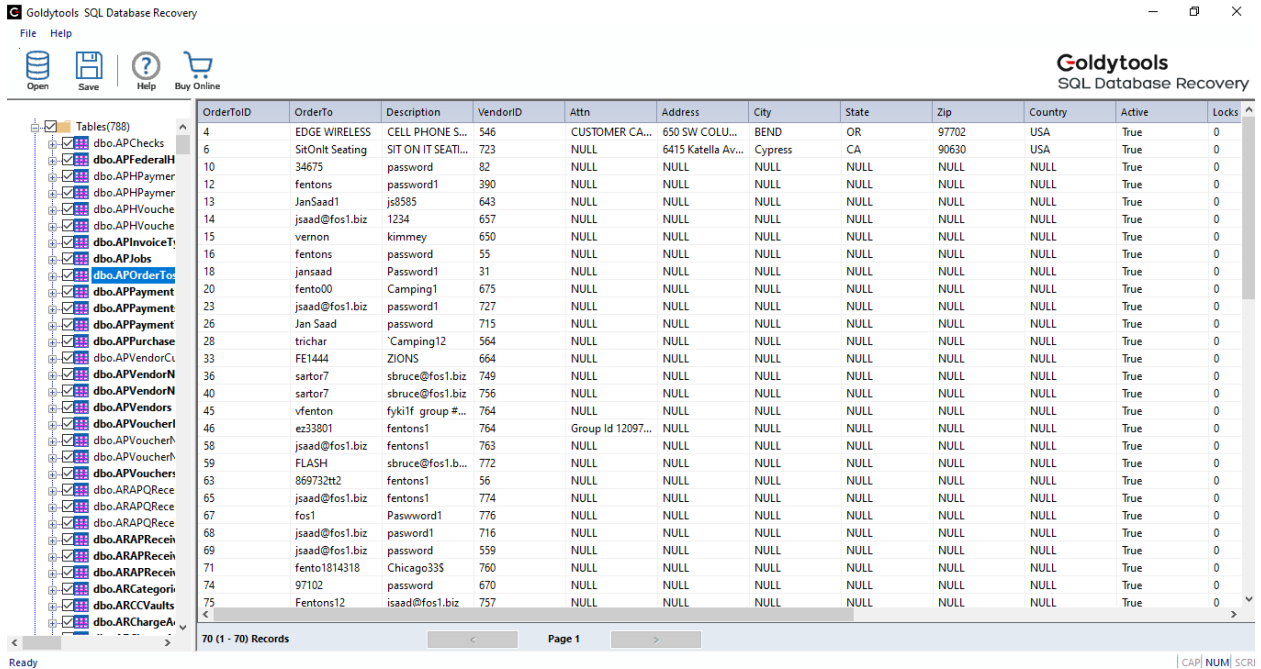
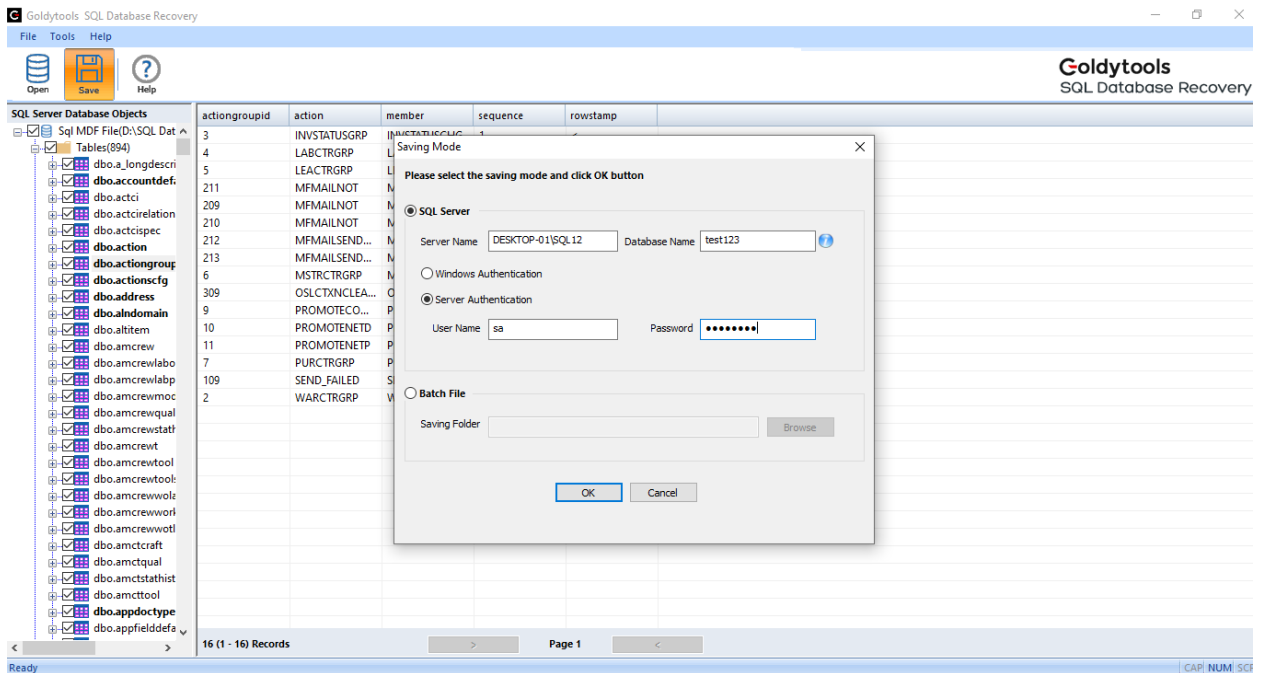


Figure 1.5.5 Preview of Selected Object

- After previewing the required items, select the data for saving, and then click the Save button. The 'Saving Mode' dialog box appears:



You can save the recovered objects in two different modes which are:

a. SQL Server: Using this option, the recovered objects can be saved on SQL Server directly, even if the server is running. To save the data on SQL Server:

1. Mention Server Name and Name of the database in Server Name and Database Name fields respectively. Do not provide the name of an existing database in the Database Name field. Create a new database in SQL Server Management Studio and enter the name of the new database in the Database Name field. However, existing database name can also be provided but in case of existing database restored objects will get merged with existing objects.

2. Select the Authentication option with which you wish to access the SQL Server, i.e. Windows Authentication or Server Authentication. To access SQL Server with Server Authentication, you need to enter User Name and Password in the respective fields.

6. After selecting the required Saving Mode option, click the OK button. The software starts saving the recovered objects:

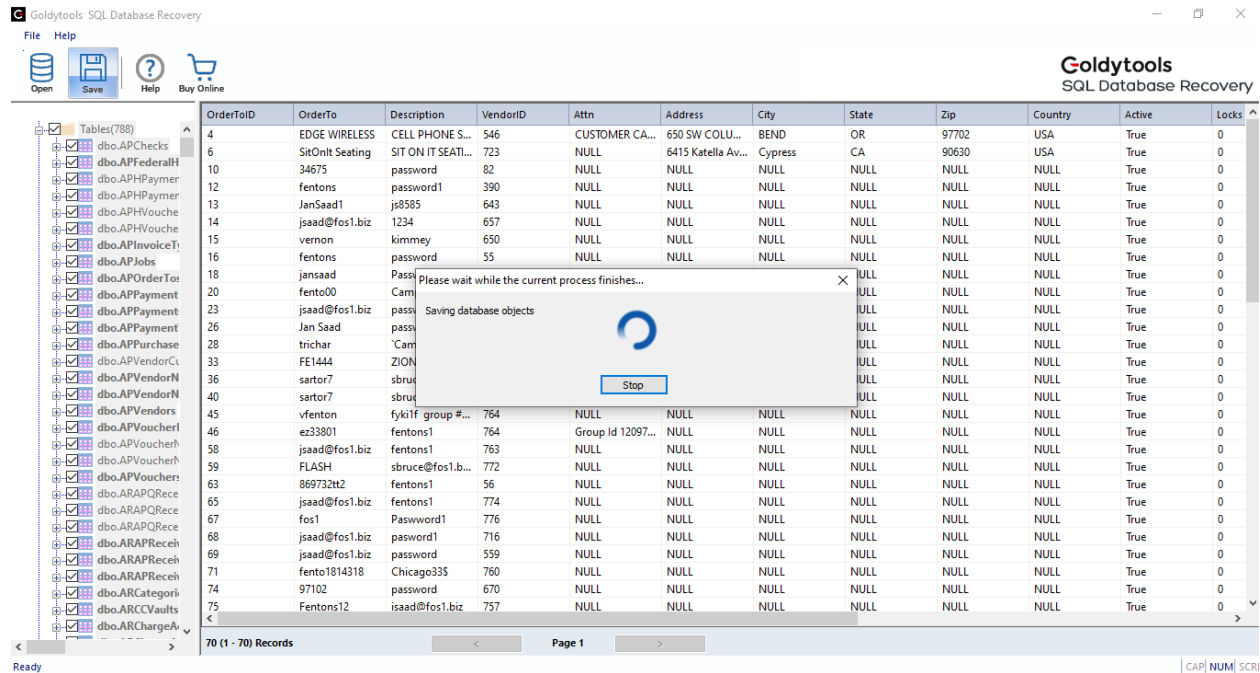


Figure 1.5.7: Saving Database Objects in Progress

7. The software displays the following 'Process Completed' dialog box when the data is saved successfully at the desired location:

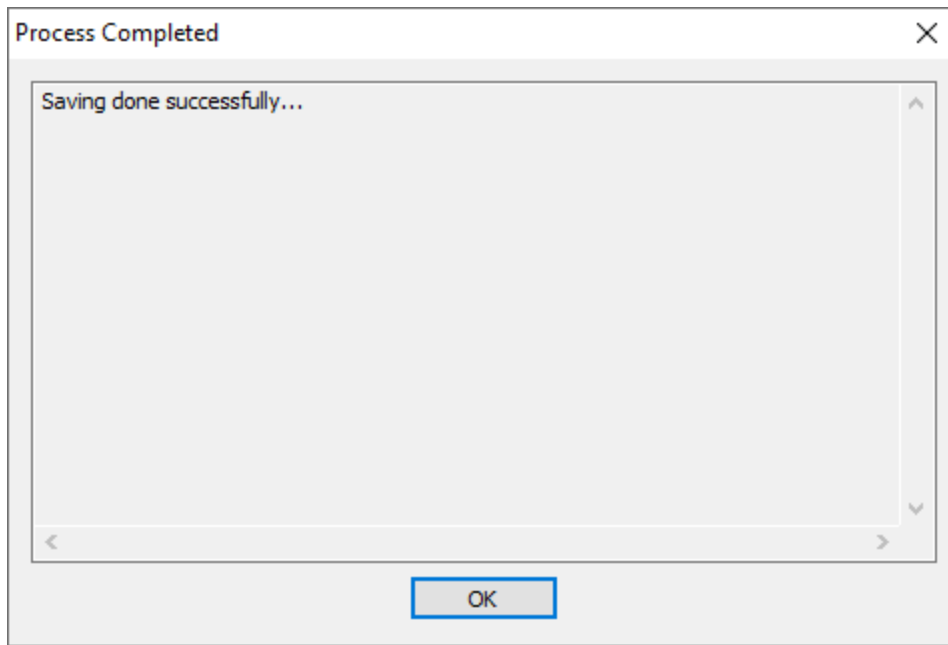


Figure 1.5.8: Successful Saving of Database Objects

8. Click OK button to close the 'Process Completed' dialogbox.